

**KS65D3338A8-16F-I-W**

General Electrical Properties			
General parameters	Frequency Range (MHz)	3300-3800	
	Polarization	±45°	
	Electrical Downtilt (°)	2-12, continuously adjustable	
	Max. power per port (W)	50 (at 50°C ambient temperature)	
	Impedance (Ω)	50	
	Grounding	DC Grounding	
Calibration and electrical parameters	Coupling factor between calibration port and each antenna port (dB)	-26±2	
	Max. amplitude tolerance from calibration port to input ports (dB)	0.9	
	Max. phase tolerance from calibration port to input ports (°)	7	
	VSWR	≤1.5	
	Co-polarization isolation between ports (dB)	2°~6°≥20; 7°~12°≥25	
	Cross-polarization isolation between ports (dB)	2°~6°≥20; 7°~12°≥25	
TDD LTE Electrical Specifications			
Radiation parameters	Frequency Range (MHz)	3300-3800	
	Single column beam	Gain (dBi)	16.0±1.0
		Horizontal 3dB Beam Width (°)	70±10
		Front to Back Ratio (dB)	>22
		Cross-Polar Ratio, 0° (dB)	>18
		Vertical 3dB Beam Width (°)	6.0±0.5
		Side lobe suppression for first side lobe above main beam (dB)	>15
	65° Broadcast beam	Gain (dBi)	16.5±1.0
		Horizontal 3dB Beam Width (°)	65±10
		Front to Back Ratio (dB)	>21
		Vertical 3dB Beam Width (°)	6.0±0.8
		Side lobe suppression for first side lobe above main beam (dB)	>15
	Service beam	0° direction Beam Gain (dBi)	21±0.8
		0° direction Beam Horizontal 3dB Beam Width (°)	26
		0° direction Beam horizontal side lobe suppression (dB)	>16
		0° direction Beam Front to Back Ratio, ±30° (dB)	>30
		0° direction Beam Cross-Polar	>19



KBT

8-Ports TDD Smart Antenna

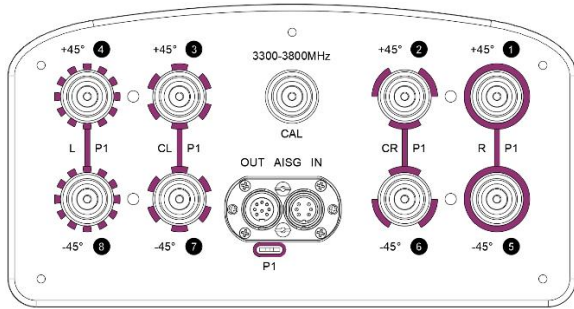
	Ratio, 0° (dB)	
Values based on NGMN recommendations on Base Station Antenna Standards V12.0 (BASTA V12.0)		

Mechanical Specifications

RET type	Integrated RET (AISG2.0/3GPP)
AISG Connectors (1 in 1 out)	2 x 8 pin (in: Male; out: Female)
Connector	8 x 4.3-10 Female + Cal: 1 x 4.3-10 Female, Bottom
Antenna dimensions (H x W x D) (mm)	998 x 270 x 140
Packing dimensions (H x W x D) (mm)	1213 x 360 x 245
Antenna weight (kg)	11.2
Clamps weight (kg)	5.5
Diameter of installation pole (mm)	φ55-φ115
Radome material	Fiberglass
Radome color	Light grey
Operational temperature (°C)	-40 to +70
Wind load at 42m/s (N)	238/ 98/ 342 (Frontal/ Lateral/ Rearal)
Max. operational wind speed (km/h)	200

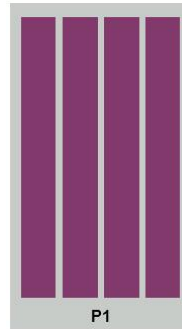
Layout and Pattern

Connector Position:



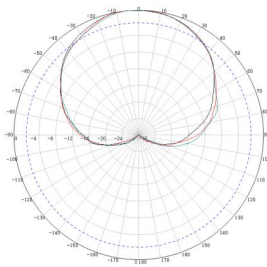
P1: 3300-3800 MHz;

Configuration Types:

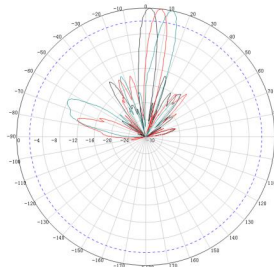


RET S/N:
KBxxx-P1-xx.....;

Pattern sample for reference:



3300-3800 MHz (Horizontal)



3300-3800 MHz (Vertical)

Add: No.30 Dongyang 3rd Road, Danzao Town, Nanhai District, Foshan City, Guangdong, China 528216

Tel: +86-757-88022860

Email: kbt@kenbotong.com

Web: <http://www.kenbotong.com>